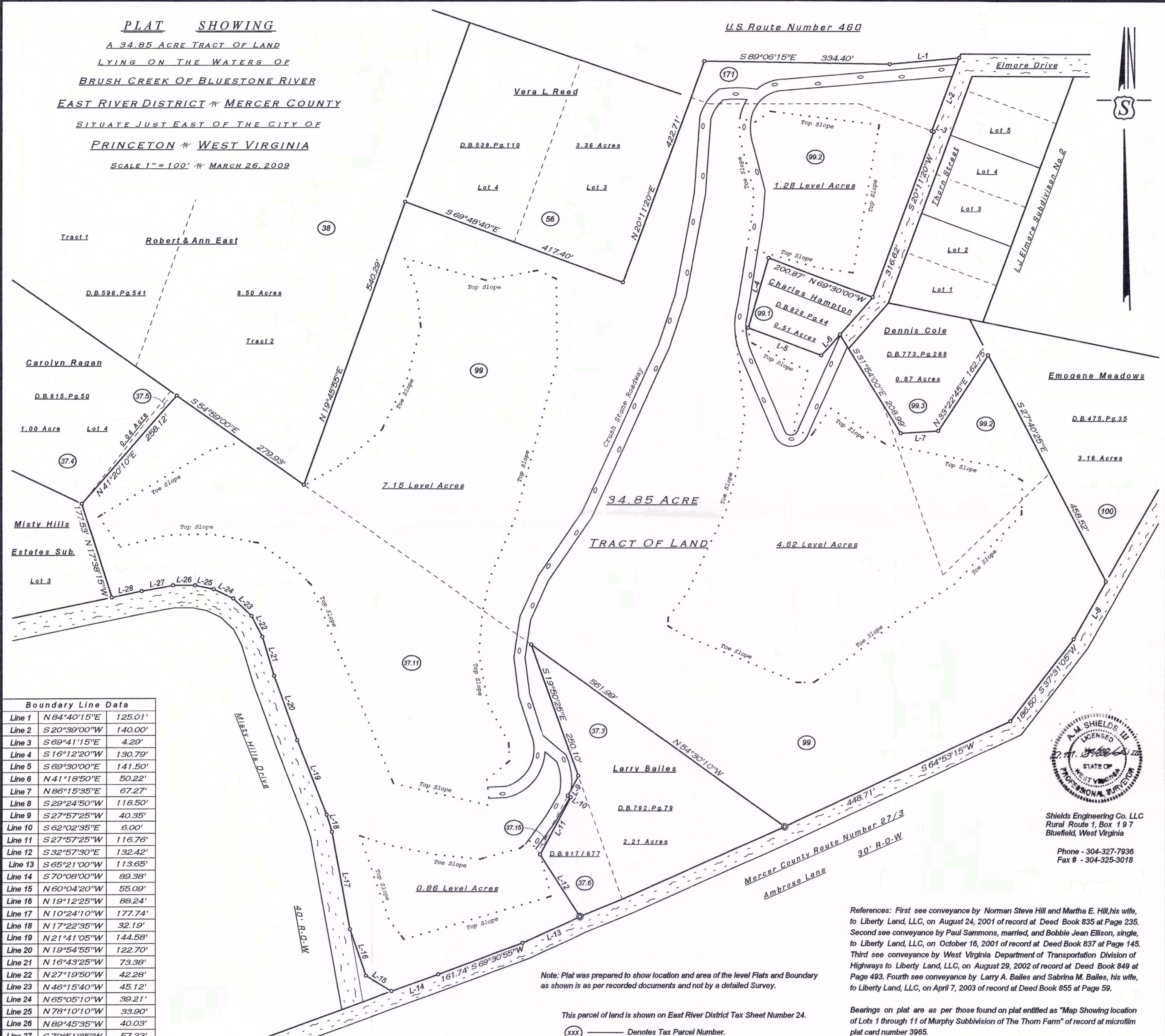


PLAT SHOWING

A 34.85 ACRE TRACT OF LAND
 LYING ON THE WATERS OF
 BRUSH CREEK OF BLUESTONE RIVER
 EAST RIVER DISTRICT $\&$ MERCER COUNTY
 SITUATE JUST EAST OF THE CITY OF
 PRINCETON $\&$ WEST VIRGINIA

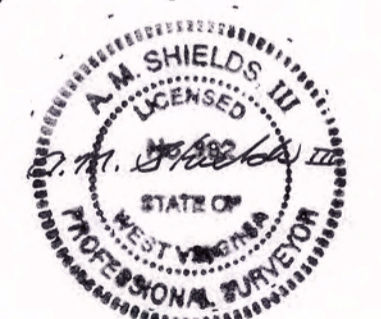
SCALE 1" = 100' $\&$ MARCH 26, 2009



Boundary Line Data		
Line 1	N 84°40'15"E	125.01'
Line 2	S 20°39'00"W	140.00'
Line 3	S 69°41'15"E	4.29'
Line 4	S 16°12'20"W	130.79'
Line 5	S 69°30'00"E	141.50'
Line 6	N 41°18'50"E	50.22'
Line 7	N 86°15'35"E	67.27'
Line 8	S 29°24'50"W	118.50'
Line 9	S 27°57'25"W	40.35'
Line 10	S 62°02'35"E	6.00'
Line 11	S 27°57'25"W	116.76'
Line 12	S 32°57'30"E	132.42'
Line 13	S 65°21'00"W	113.65'
Line 14	S 70°08'00"W	89.38'
Line 15	N 60°04'20"W	55.09'
Line 16	N 19°12'25"W	88.24'
Line 17	N 10°24'10"W	177.74'
Line 18	N 17°22'35"W	32.19'
Line 19	N 21°41'05"W	144.58'
Line 20	N 19°54'55"W	122.70'
Line 21	N 16°43'25"W	73.38'
Line 22	N 27°19'50"W	42.28'
Line 23	N 46°15'40"W	45.12'
Line 24	N 65°05'10"W	39.21'
Line 25	N 78°10'10"W	33.90'
Line 26	N 89°45'35"W	40.03'
Line 27	S 79°51'35"W	57.22'
Line 28	S 78°25'40"W	54.88'

Note: Plat was prepared to show location and area of the level Flats and Boundary as shown is as per recorded documents and not by a detailed Survey.

This parcel of land is shown on East River District Tax Sheet Number 24.
 (XXX) ————— Denotes Tax Parcel Number.



Shields Engineering Co. LLC
 Rural Route 1, Box 197
 Bluefield, West Virginia
 Phone - 304-327-7936
 Fax # - 304-325-3018

References: First see conveyance by Norman Steve Hill and Martha E. Hill, his wife, to Liberty Land, LLC, on August 24, 2001 of record at Deed Book 835 at Page 235. Second see conveyance by Paul Sammons, married, and Bobbie Jean Ellison, single, to Liberty Land, LLC, on October 16, 2001 of record at Deed Book 837 at Page 145. Third see conveyance by West Virginia Department of Transportation Division of Highways to Liberty Land, LLC, on August 29, 2002 of record at Deed Book 849 at Page 493. Fourth see conveyance by Larry A. Bailes and Sabrina M. Bailes, his wife, to Liberty Land, LLC, on April 7, 2003 of record at Deed Book 855 at Page 59.

Bearings on plat are as per those found on plat entitled as "Map Showing location of Lots 1 through 11 of Murphy Subdivision of The Thorn Farm" of record at microfilm plat card number 3965.